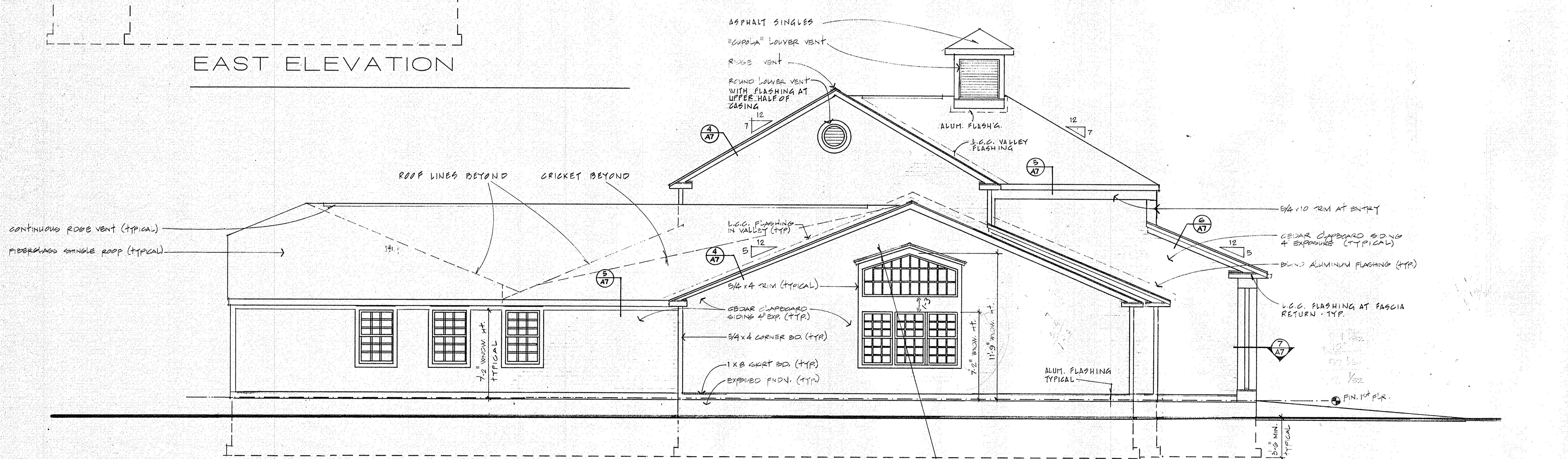
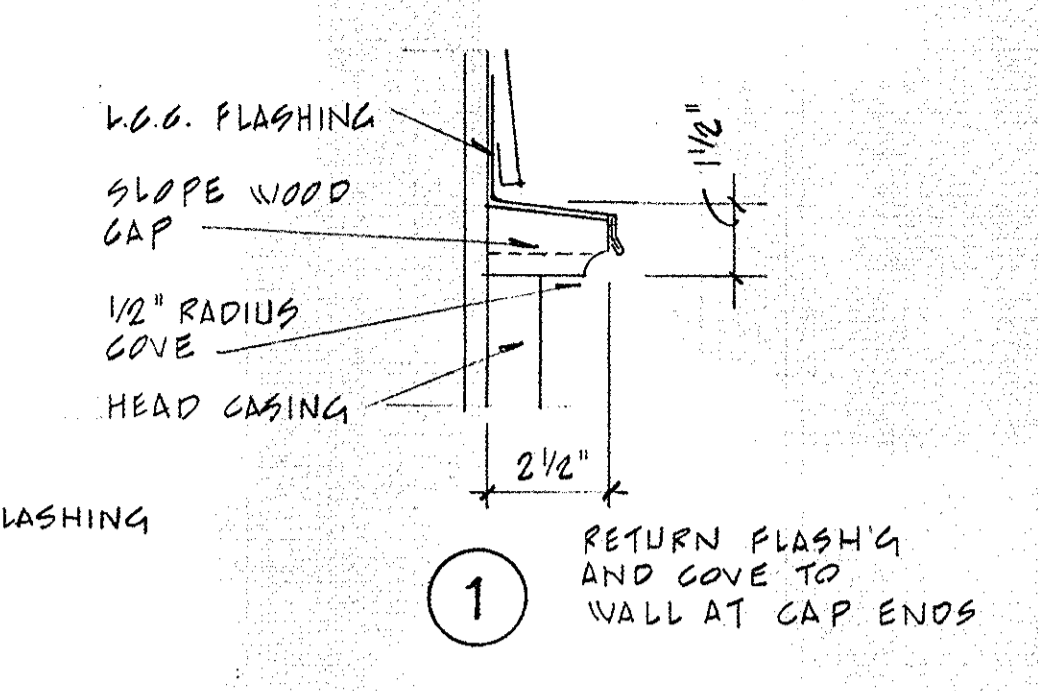


EAST ELEVATION



NORTH ELEVATION



WOOD CAP WITH L.C.G. FLASHING, FORM FLASHING AT LOW POINTS TO THROW WATER CLEAR OF SIDING SEE DETAIL (1) A7

**AT**  
DRAWING NO.

ELEVATIONS	CHECKED	DATE
SCALE	0/30/04	AT
SCALE	1/4"=1'-0"	
DRAWN	A.T.	JOB NO. 951110

Tunney Associates  
Architects & Designers  
305 Pine Orchard Rd., Killingworth, Connecticut 06439  
Arlene Tunney  
Architect  
(803) 663-2019

KILLINGWORTH LIBRARY  
ROUTE 51, KILLINGWORTH, CONNECTICUT